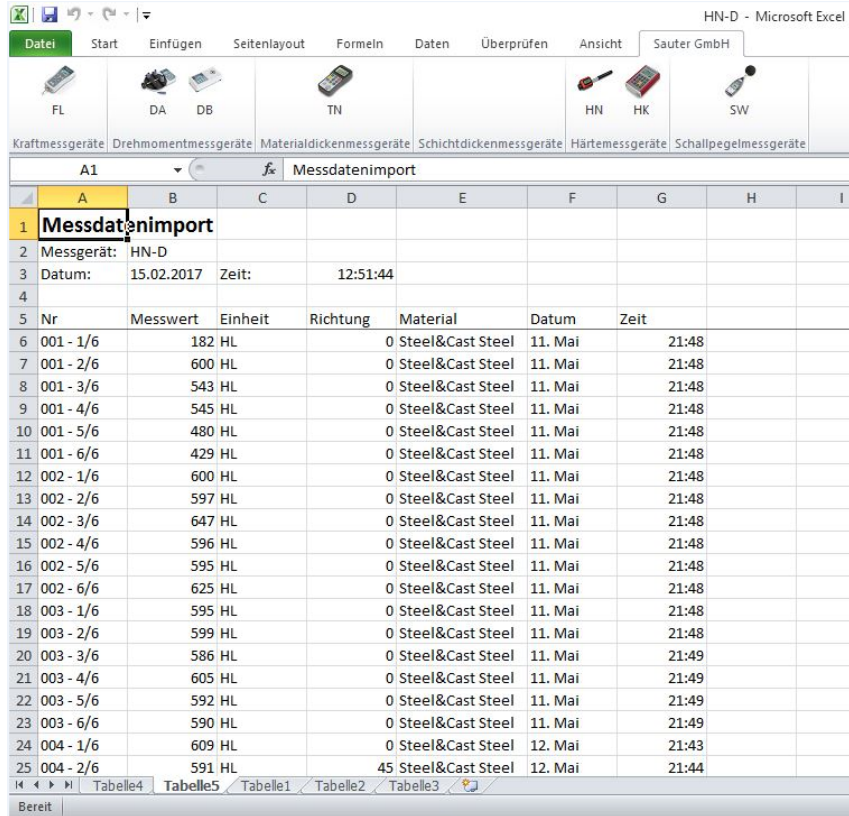


Instruction Manual Software

SAUTER AFI

V. 1.0
05/2017
GB



Nr	Messwert	Einheit	Richtung	Material	Datum	Zeit
6	001 - 1/6	182 HL		0 Steel&Cast Steel	11. Mai	21:48
7	001 - 2/6	600 HL		0 Steel&Cast Steel	11. Mai	21:48
8	001 - 3/6	543 HL		0 Steel&Cast Steel	11. Mai	21:48
9	001 - 4/6	545 HL		0 Steel&Cast Steel	11. Mai	21:48
10	001 - 5/6	480 HL		0 Steel&Cast Steel	11. Mai	21:48
11	001 - 6/6	429 HL		0 Steel&Cast Steel	11. Mai	21:48
12	002 - 1/6	600 HL		0 Steel&Cast Steel	11. Mai	21:48
13	002 - 2/6	597 HL		0 Steel&Cast Steel	11. Mai	21:48
14	002 - 3/6	647 HL		0 Steel&Cast Steel	11. Mai	21:48
15	002 - 4/6	596 HL		0 Steel&Cast Steel	11. Mai	21:48
16	002 - 5/6	595 HL		0 Steel&Cast Steel	11. Mai	21:48
17	002 - 6/6	625 HL		0 Steel&Cast Steel	11. Mai	21:48
18	003 - 1/6	595 HL		0 Steel&Cast Steel	11. Mai	21:48
19	003 - 2/6	599 HL		0 Steel&Cast Steel	11. Mai	21:48
20	003 - 3/6	586 HL		0 Steel&Cast Steel	11. Mai	21:49
21	003 - 4/6	605 HL		0 Steel&Cast Steel	11. Mai	21:49
22	003 - 5/6	592 HL		0 Steel&Cast Steel	11. Mai	21:49
23	003 - 6/6	590 HL		0 Steel&Cast Steel	11. Mai	21:49
24	004 - 1/6	609 HL		0 Steel&Cast Steel	12. Mai	21:43
25	004 - 2/6	591 HL		45 Steel&Cast Steel	12. Mai	21:44



PROFESSIONAL MEASURING

AFI-BA-e-1710



SAUTER AFI

V. 1.0 05/2017

Instruction Manual Excel PlugIn Software AFI

Congratulations for purchasing the Excel PlugIn software. It is used to read the internal memory of SAUTER measuring instruments. If you have any queries, wishes or helpful suggestions, do not hesitate to call our service number.

Summarize:

1	Introduction	3
2	Package	3
3	Requirements	3
4	Installation	3
5	Run the Software	4
5.1	Start the PlugIn	4
5.2	Setting up the data transfer	5
5.3	Data transfer	6

1 Introduction

The software is used to quickly transfer the measured data, stored in the internal memory of the measuring device, to a PC. To ensure high flexibility, you can capture the data in Excel (2010 and higher) and process it there.

SAUTER offers the software and accessories as an option to make the measuring device more versatile in use. Please contact SAUTER or your SAUTER supplier or visit our website www.sauter.eu

2 Package

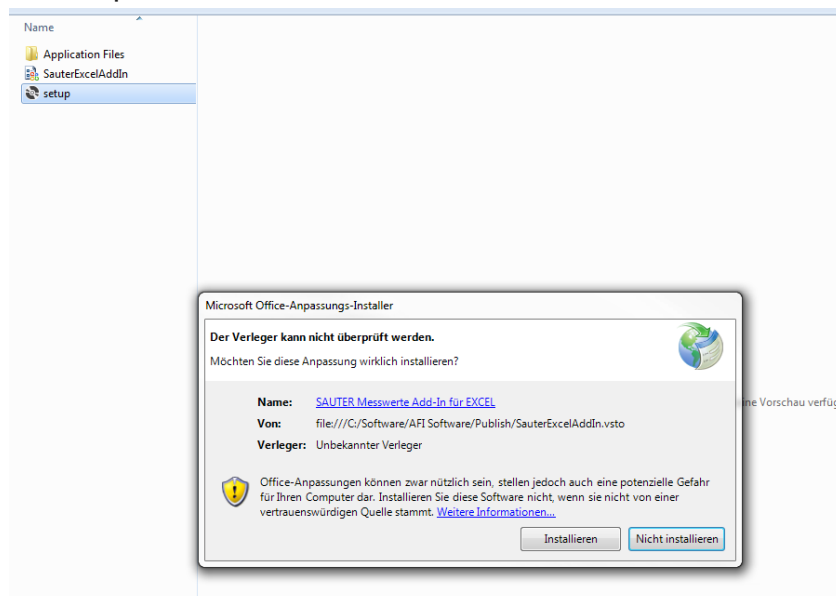
- CD with PlugIn , operation and installation instructions

3 Requirements

- Windows operating system
- Excel version 2010 and higher
- Admin privileges for the user account (required doe installing the plug-in)

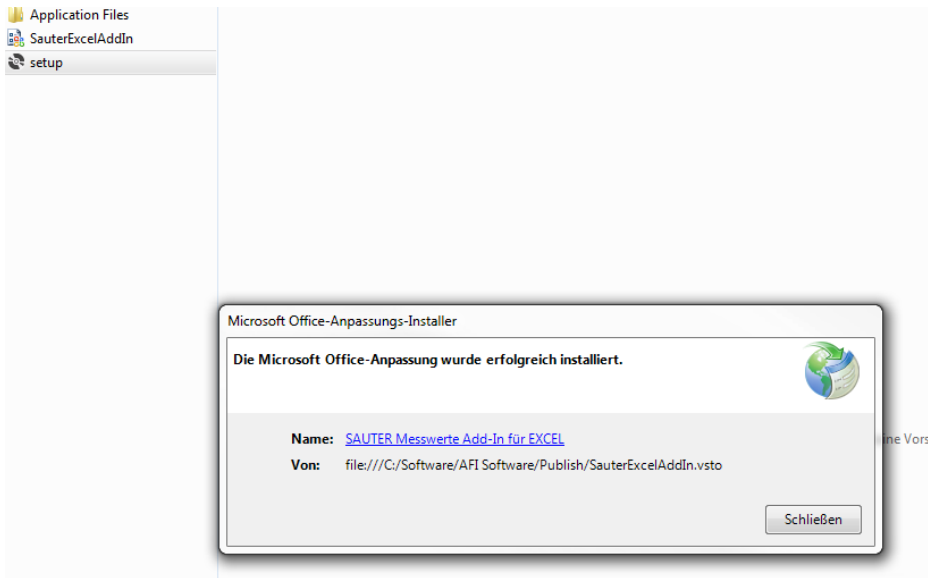
4 Installation

Insert the CD into the PC and double-click Setup. Installation starts automatically. The required data is installed.



Confirm security request.

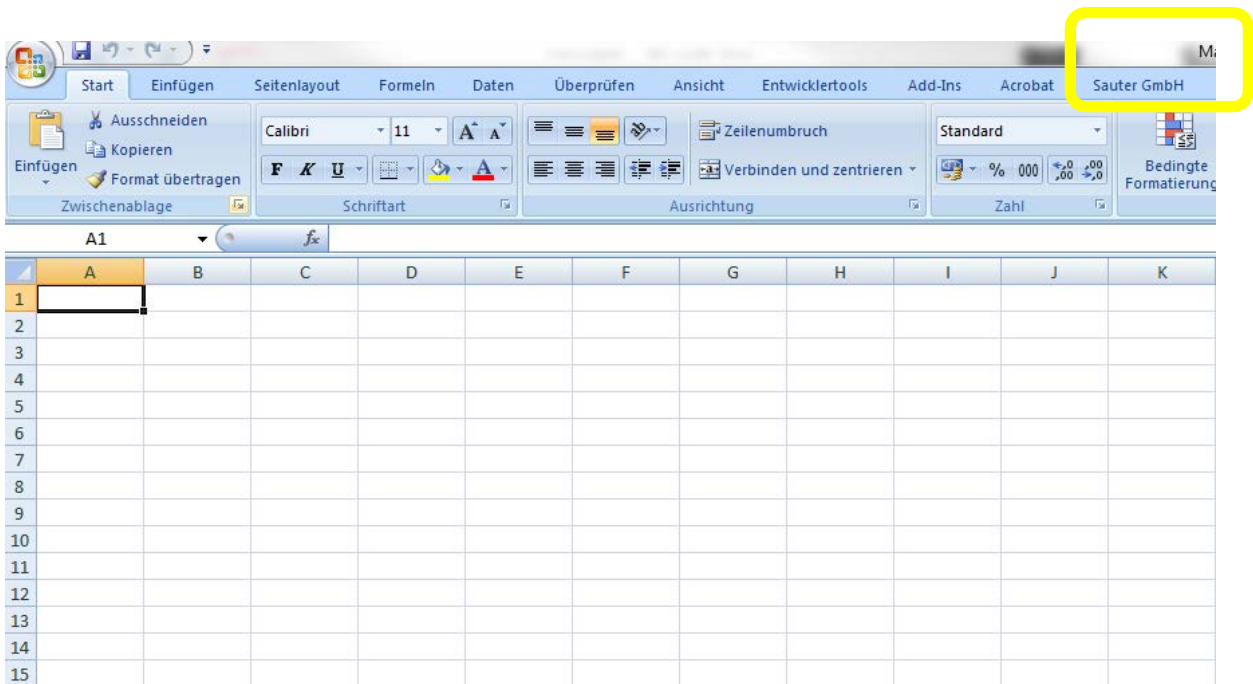
Installation finished.



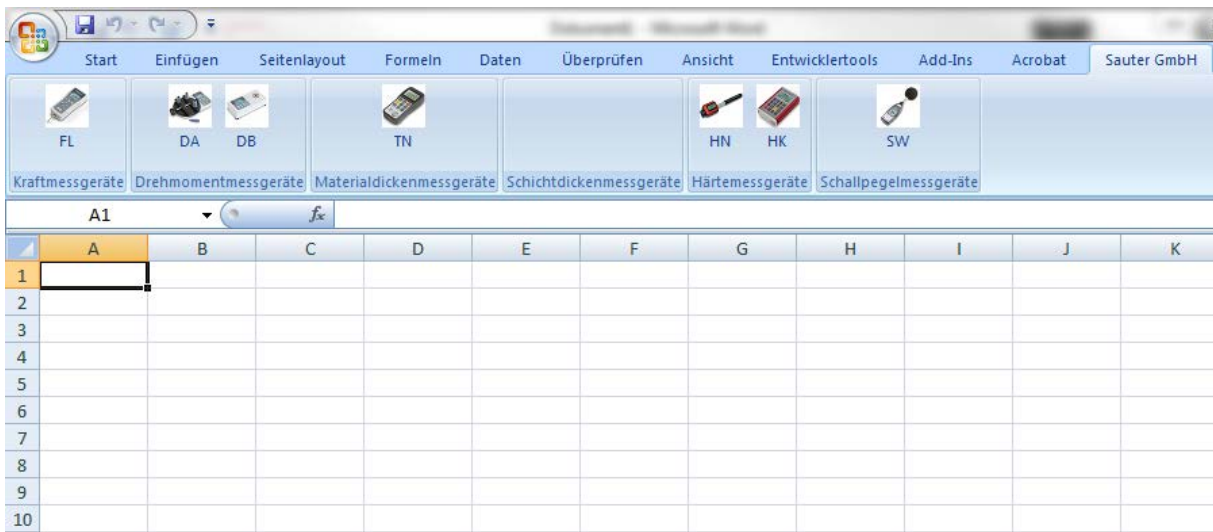
5 Run the Software

5.1 Start the PlugIn

After installing the plug-in, a new main register card "Sauter GmbH" appears in Excel. With this register card you can use the plug-in.

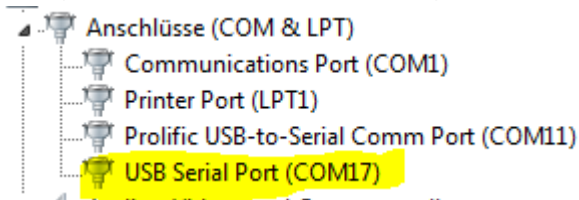


After clicking on this main tab, you can use the plug-in.



5.2 Setting up the data transfer

Now connect your measuring device to the PC. Please note that the device is recognized in the device manager of the operating system.



This view may vary. It is important that the device is displayed. Otherwise, no data transfer can take place.

5.3 Data transfer

Now please click on the button corresponding to the meter in Excel and the measurement data will be transferred.

Mappe1 - Microsoft

File Start Einfügen Seitenlayout Formeln Daten Überprüfen Ansicht Sauter GmbH

FL DA DB TN HN HK SW

Kraftmessgeräte Drehmomentmessgeräte Materialdickenmessgeräte Schichtdickenmessgeräte Härtemessgeräte Schallpegelmessgeräte

A1 *fx* Messdatenimport

	A	B	C	D	E	F	G	H	I
1	Messdatenimport								
2	Messgerät:	FL 25N							
3	Datum:	19.05.2017	Zeit:	08:22:00					
4									
5	Nr	Messwert	Einheit						
6	1	9.27	N						
7	2	-12.21	N						
8	3	12.1	N						
9	4	-16.01	N						
10	5	-16.83	N						
11	6	8.99	N						
12	7	4.53	N						
13	8	2.51	N						
14	9	12.16	N						
15	10	18.33	N						
16	11	-12.23	N						
17	12	-13.39	N						
18	13	-16.43	N						
19	14	-19.2	N						
20	15	11.41	N						
21	16	13.56	N						
22	17	13.44	N						
23	18	-18.13	N						
24	19	-17.16	N						
25	20	-17.37	N						

All data in the internal memory of the device are transferred and entered into the table. You can save the table as usual or process your data further.

