

Load cells SAUTER CS P1 · CS Q1

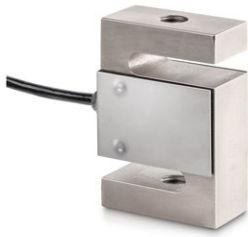


Fig. shows optional accessory **1** SAUTER CE R20, for further accessories please visit our online shop

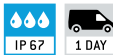


Fig. shows optional accessory traction device **2** SAUTER CE Q12, for further accessories please visit our online shop

CS P1

4-wire "S" measuring cells made of nickel-plated steel for force and mass measurement

STANDARD



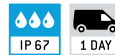
- Accuracy in accordance with OIML R60 class C3
- Dust and spray protection to IP67 (in accordance with EN 60529), welded to create a hermetic seal
- Nickel-plated steel
- Scope of application: for tensile and compressive force measurement
- Suitable for handing scales, weigh hoppers and other weighing devices as well as force measurement devices and test benches
- 4-wire connection
- Note: EX version and accuracy class C4 on request
- Nominal sensitivity: 2 mV/V

Model	Nominal load	
SAUTER		
CS 25-3P1	25 kg / 250 N	
CS 50-3P1	50 kg / 500 N	
CS 100-3P1	100 kg / 1 kN	
CS 150-3P1	150 kg / 1,5 kN	
CS 250-3P1	250 kg / 2,5 kN	
CS 500-3P1	500 kg / 5 kN	
CS 600-3P1	600 kg / 6 kN	
CS 750-3P1	750 kg / 7,5 kN	
CS 1000-3P1	1 t / 10 kN	
CS 1500-3P1	1.5 t / 15 kN	
CS 2000-3P1	2 t / 20 kN	
CS 2500-3P1	2.5 t / 25 kN	
CS 5000-3P1	5 t / 50 kN	
CS 7500-3P1	7.5 t / 75 kN	
CS 10000-3P1	10 t / 100 kN	
CS 15000-3P1	15 t / 150 kN	
CS 20000-3P1	20 t / 200 kN	
CS 30000-3P1	30 t / 300 kN	

CS Q1

6-wire "S" measuring cells made of nickel-plated steel for force and mass measurement

STANDARD



- Accuracy class C3
- Dust and spray protection to IP67 (in accordance with EN 60529), hermetically encapsulated
- Nickel-plated steel
- Scope of application: for tensile and compressive force measurement
- Suitable for handing scales, weigh hoppers and other weighing devices as well as force measurement devices and test benches
- 6-wire connection
- Nominal sensitivity: 2 mV/V

Model	Nominal load	
SAUTER		
CS 50-3Q1	50 kg / 500 N	
CS 100-3Q1	100 kg / 1 kN	
CS 150-3Q1	150 kg / 1,5 kN	
CS 200-3Q1	200 kg / 2 kN	
CS 300-3Q1	300 kg / 3 kN	
CS 500-3Q1	500 kg / 5 kN	
CS 750-3Q1	750 kg / 7,5 kN	
CS 1000-3Q1	1 t / 10 kN	
CS 1500-3Q1	1.5 t / 15 kN	
CS 2000-3Q1	2 t / 20 kN	
CS 3000-3Q1	3 t / 30 kN	
CS 5000-3Q1	5 t / 50 kN	
CS 6000-3Q1	6 t / 60 kN	

Accessories CT P1:

- Traction device, steel, galvanised, suitable for CS P1, SAUTER CE Q12
- Rod end, steel, galvanised, suitable for CS 25-3P1, CS 50-3P1, SAUTER CE R8
- Rod end, steel, rustproof, suitable for CS 25-3P1, CS 50-3P1, SAUTER CE RR8
- Rod end, steel, rustproof, suitable for CS 100-3P1, CS 150-3P1, SAUTER CE RR10
- Rod end, steel, galvanised, suitable for CS 100-3P1, CS 150-3P1, SAUTER CE R10
- Rod end, steel, galvanised, suitable for CS P1, CS P2 with 50 kg \geq nominal load \leq 1 t, SAUTER CE R12
- Rod end, steel, rustproof, suitable for CS P1, CS P2 with 50 kg \geq nominal load \leq 1 t, SAUTER CE RR12
- **1** Rod end, steel, galvanised, suitable for CS 2000-3P1, CS 2500-3P1, CS 5000-3P1, SAUTER CE R20
- Rod end, steel, rustproof, suitable for CS 2000-3P1, CS 2500-3P1, CS 5000-3P1, SAUTER CE RR20

Accessories CT Q1:

- **2** Traction device, steel, galvanised, suitable for CS P1, SAUTER CE Q12
- Traction device, steel, galvanised, suitable for CS 1500-3Q1, CS 2000-3Q1, SAUTER CE Q16
- Traction device, steel, galvanised, suitable for CS 3000-3Q1, CS 5000-3Q1, CS 6000-3Q1, SAUTER CE Q24
- Rod end, steel, galvanised, suitable for CS P1, CS P2 with 50 kg \geq nominal load \leq 1 t, SAUTER CE R12
- Rod end, steel, rustproof, suitable for CS P1, CS P2 with 50 kg \geq nominal load \leq 1 t, SAUTER CE RR12
- Rod end, steel, galvanised, suitable for CS 1500-3Q1, CS 2000-3Q1, SAUTER CE R16
- Rod end, steel, rustproof, suitable for CS 1500-3Q1, CS 2000-3Q1, SAUTER CE RR16
- Rod end, steel, galvanised, suitable for CS 3000-3Q1, CS 5000-3Q1, CS 6000-3Q1, SAUTER CE R24
- Rod end, steel, rustproof, suitable for CS 3000-3Q1, CS 5000-3Q1, CS 6000-3Q1, SAUTER CE RR24



Tip: Further details and technical data sheet as well as extensive accessories see internet